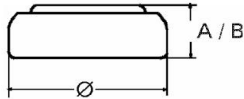


**Type Number**..... 392  
**Designation IEC**..... SR41  
**System**..... Silver oxide/ Zinc /  
 KOH - Electrolyte



**Nominal Voltage**..... 1,55 V  
**Typical Capacity C**..... 40 mAh  
 Load 13 k $\Omega$ , at 20°C down to 1.2 V

**Weight (approx.)**..... 0,62g  
**Volume**..... 0,16 ccm  
**Coding**..... Manufacturing Month/Year  
 by Letter Code

**Temperature Ranges** min max.  
 Storage..... 0°C 60°C  
 Discharge..... 0°C 60°C

**Dimensions** min max.  
 Diameter (A)..... 7,55 7,90  
 Height (B)..... 3,30 3,60

### Typical Capacities (at 20°C)

Discharge Type	Load	End Voltage: 1.2V	
Continuous 24h/d, 7d/w	13000 $\Omega$	Time:	340 h
		Capacity:	40 mAh
		Energy:	58 mWh

### No publication or circulation of data to third parties without consent of VARTA Consumer Batteries

All Data contained herein is for single cells For battery applications, performance data may vary from single cell data, depending on specific battery configuration