

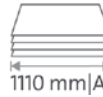
# Guillotine 585



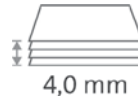
- High-quality guillotines for commercial use
- Sturdy solid metal table
- Practical format lines on the table facilitate exact alignment of the item being cut
- Ergonomically shaped handle
- Ground upper blade made of hardened, re-sharpenable Solingen steel bolted to the solid steel blade holder
- Bolted lower blade of ground and hardened Solingen steel
- High-quality, re-sharpenable blades made of Solingen steel
- Sturdy, solid-steel blade holder for optimum guidance of the screw-mounted upper blade
- Transparent blade guard for cutting safety and unobstructed view of the item being cut
- Material blade suitable for a wide range of different materials - different grind to paper blades. The full cutting height given cannot always be used with some materials deemed suitable for cutting: the full cutting height should definitely not be used when cutting paper. In this instance, we recommend using a guillotine with a paper blade.
- Convenient foot clamping for evenly clamping large-format items
- Two scale bars with mm scale for an exact 90° cut
- Adjustable metal backstop in guide channels for quickly finding the right format can be used on both scale bars and the front table
- Can be locked to prevent unauthorised use
- Folding front table with guide channels
- Precision narrow-strip cutting device for cutting extremely thin strips is optionally available (793)
- Precision laser beam line indicator for professional cutting results is optionally available (797)
- Firmly attached stand with base tray for a working height of 74 cm



Commercial use:  
always ready for top performance.



Cutting length 1100 mm



Cutting capacity 4.0 mm



Table size (overall dimensions) 1165 x 760 mm



Carries the GS DGUV (German Statutory Accident Insurance Association) test mark



Transparent or metal blade guard for safe cutting, see product description



With material blade suitable for cutting all sorts of materials



Can be locked to prevent unauthorised use



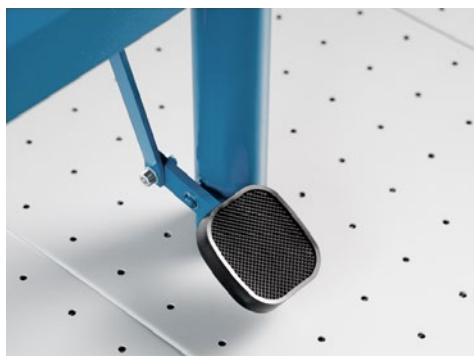
Extended 5-year guarantee (except wearing parts)



German Engineering by Dahle

Article number	Cutting length in mm	DIN	Cutting capacity in mm	Table size, external dimensions, in mm	Table size, external dimensions with supporting table, in mm	Features	Colours	EAN
00585-20103	1100	A1	4	1.165 mm x 760 mm	1.165 x 1.135	Material blade		4007885005850

# Guillotine 585



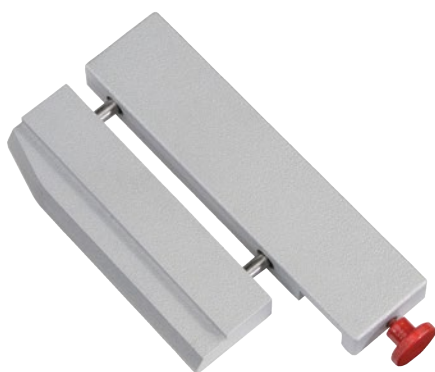
Convenient foot clamping for securely clamping large-format items



Precision laser beam line indicator for professional cutting results - optional



Adjustable metal backstop in guide channels for quickly finding the right format - can be used on both scale bars and the front table



Precision narrow-strip cutting device for cutting extremely thin strips - optional



Folding front table for large-format cutting work